



Log Me In



By: Frank Fahey

Remote Control

- A few years ago, a few of us at the Hilton Head Island Computer Club did some looking into computer remote access with a look to no cost and relatively easy use. There was a free open source and some variations and also Microsoft offered it with Windows XP. Getting IP addresses and getting through routers and firewall were tough along with some other issues and it went no where. Since that time I have had some luck with PC Anywhere over a VPN connection but this approach is relatively expensive and the VPN is not available to most.

A New Player

- So not I come to logmein.com. In a recent PC World issue, I came across this free remote control and it removes all the above issues that we has earlier. Basically you download about a 3.5 MB file and load it on the computer that you want to be the host/server. You need to used the logmein and not the logmein pro version for the free use of the software. It works very well. There is an Active X plug-in that you need to install on the accessing computer but this should not be of concern. Those with SP2 on Windows XP will need to grant authority to load the plug-in.

Here are the computers requirements:

- • Windows 98, 2000, XP, and Server 2003.
- • Internet Explorer or Netscape Navigator 4.0 or later.
- • A computer always connected to the Internet via cable modem, ISDN, or DSL.
- • On Windows NT/2000/XP/Server 2003 you must be a user with administrative privileges to install the software. You can check your current username or add new users to your PC by opening the Control Panel on your PC and clicking on User Accounts.

And for the access computer:

- Local PC (the computer you will use to access the Target PC):
- • To remotely access your Target PC, all you need is any computer connected to the Internet or any web-enabled Pocket PC device.

Instructions

- When installing the software you need to supply your email address and a password. You go the web site logmein.com and log in with your email address and password and the remote computer (s) are shown. Clicking on the computer will create a dropdown menu, and you should select Connect.

Logmein site

The screenshot shows the LogMeIn website in a Microsoft Internet Explorer browser window. The browser's address bar displays <https://secure.logmein.com/>. The website header includes the LogMeIn logo with the tagline "the secure connection" and a navigation menu with "LogMeIn.com", "Products", and "Log In >>". A contact number "Questions? Call 800.993.1790" is also present. Below the header, there are "Support" and "Contact" buttons. The main content area features a dark blue background with a list of user types: "Mobile Professionals", "Home & Personal", "IT Administrators", and "Support & Helpdesk". To the right of this list, the text reads "Fast, easy & secure remote access & support solutions. Over 1,000,000 users agree." and a yellow button labeled "Get FREE Trial >>".

Below the main content area, there are several sections:

- A "Radio Listeners - click here" button with a radio icon.
- A "What the media is saying" section featuring a PC Magazine Editors' Choice award logo for May 24, 2005, with the text "LogMeIn wins PC Magazine's Editors' Choice on May 24th, 2005 for LogMeIn Free." and a "[more]" link.
- A "Latest Press Release - view all" section with a link to "World's Most Popular Remote Access Service Adds Native Mozilla Support".
- A "Latest News - view all" section with a link to "September 19, 2005 - How to keep your laptop secure".
- A "Have an account? Log in." section with a login form containing an email field (filled with "ffahey@hargray.com"), a password field (filled with "*****"), and a "Log Me In >>" button. Below the form are links for "New user? Create an account." and "forget your password?".
- A "Which product is right for you?" section with a question mark icon.

The browser's status bar at the bottom shows "Done" and "Internet".

Computer choice

LogMeIn - Remote Access and Desktop Control Software for your PC - Microsoft Internet Explorer

File Edit View Favorites Tools Help Address <https://secure.logmein.com/go.asp?page=mycomputers> Go

Back Forward Stop Home Search Favorites LogMeIn.com Products Log Out »

logmein *the secure connection* Questions? Call 800.993.1790

Home My Computers Pricing Support Contact

Home > My Computers

My Computers

[+ Add Computer](#)

FFAHEY	Computer settings
FSFAHEY	Computer settings
HHCC02	Computer settings
WS012-26	Computer settings

Online Offline

Other links

- > [My Account](#)
- > [Upgrade to LogMeIn Pro](#)
- > [Buy More Subscriptions](#)
- > [Tell a friend](#)
- > [Support](#)
- > [Forums](#)

Upgrade Now

\$69.95/year for LogMeIn Pro

Transfer files, synchronize folders, distribute files, invite guests & more!

[Go](#)

[Privacy Policy](#) | [Terms & Conditions](#) | [About Us](#) | [Press](#) | [Forums](#) | [Site Map](#)

Copyright © 2005 3am Labs, Inc. All rights reserved.

thawte Secure SSL by Thawte, a VeriSign Company.

3amlabs

Internet

Instructions

- You will get next a login area and you must use a legitimate log in for the computer (one for a user in the administrator group for Win 2000 and XP). The next screen will have a chance to select Go. The first time you use it, a screen will come up with Proceed to be clicked on and then another screen before the actual remote screen come up.

Select FFAHEY computer

FFAHEY - LogMeIn - Microsoft Internet Explorer

Address <https://ffahey-ddcknagnug.app07.logmein.com/main.html>

Back Forward Stop Refresh Home Search Favorites

Google Links >>

Preferences Help

Home

Remote Control

Disconnect

Connected to FFAHEY

Remote Control

Control your remote PC as if you were sitting in front of it.

- » Full screen view
- » Remote-to-local printing
- » Control keyboard and mouse
- » Copy-and-paste between PCs

Open remote control in a new window **Go >>**

Preferences

Set preferences to specifically meet your needs.

- » Remote screen blanking
- » Extra security features
- » Network settings
- » Usage settings

Go >>

Help

All the resources you need to take full advantage of LogMeIn Pro.

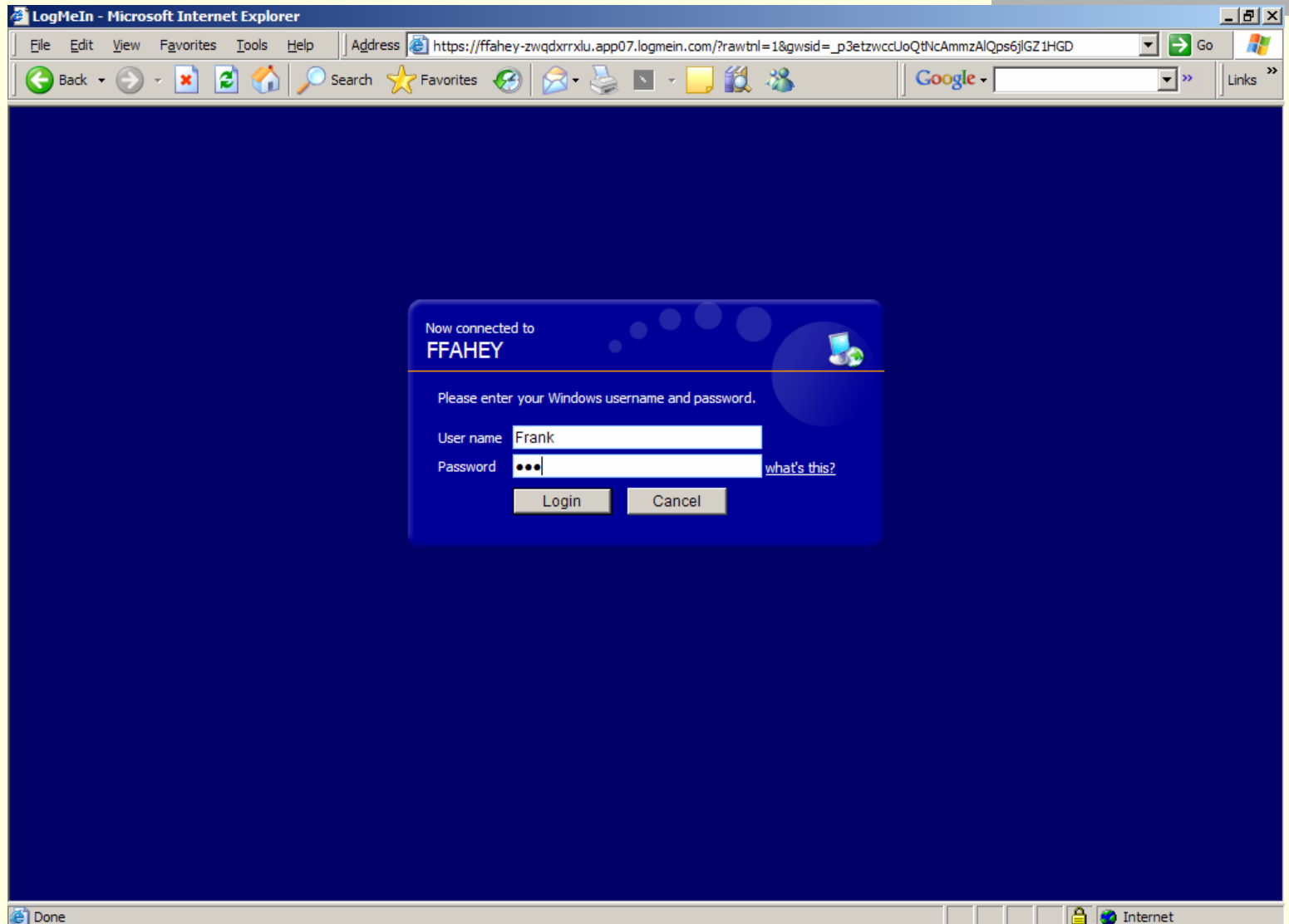
- » Getting Started Guide
- » Account details
- » Customer support info
- » Feedback form

Go >>

logmein free

Done Internet

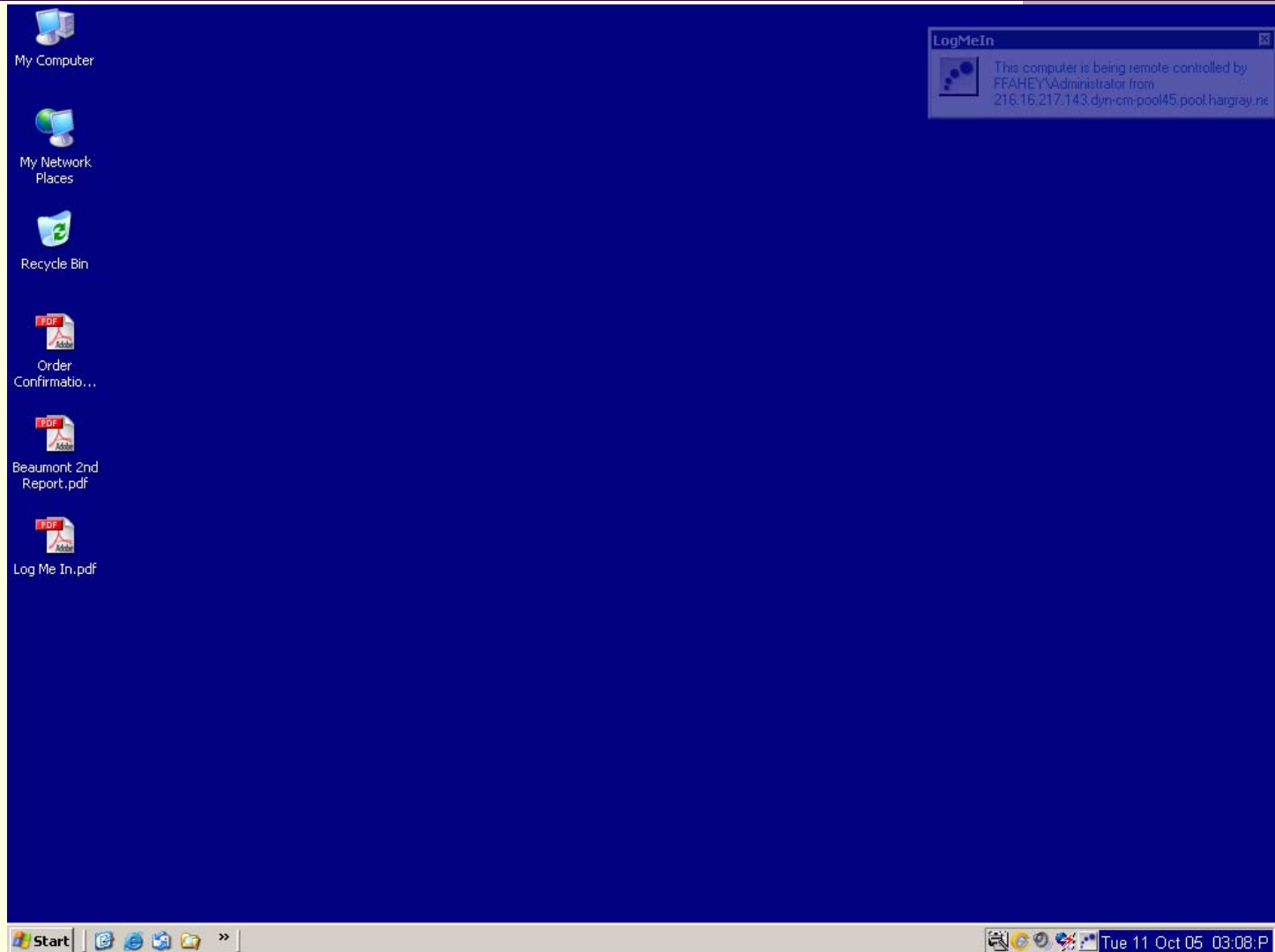
Required Log On



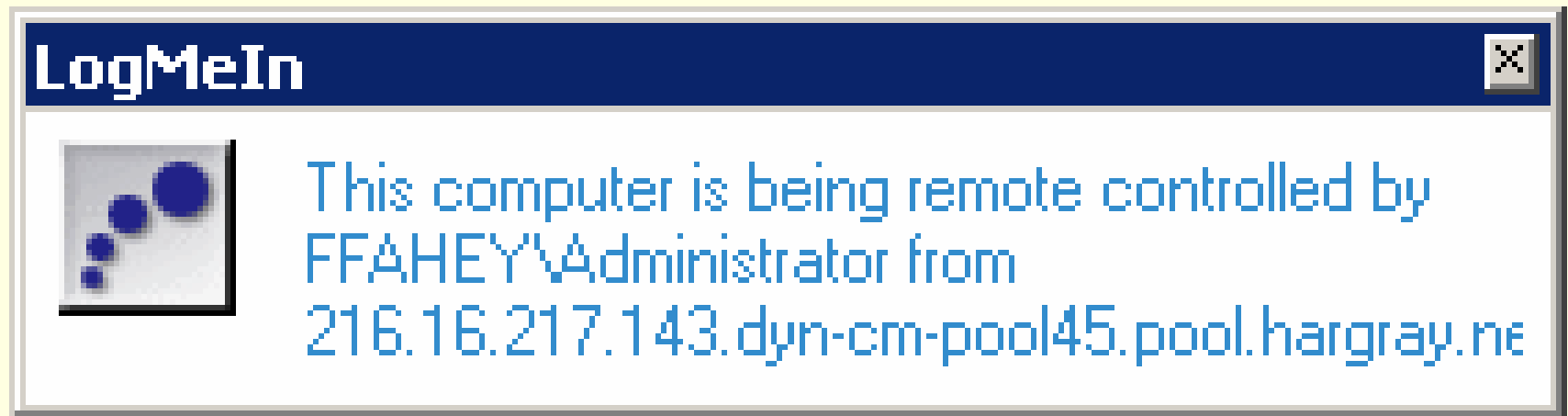
Instructions

- Under the Title bar is another bar starting with Full Screen. Click on it for full screen. For a short while that bar will locate itself in the top middle of the screen. Then it will minimize itself to a row of dots. Moving your cursor to the row of dots causes the bar to reappear. Clicking on the Full Screen again, takes you back to the previous setting. This allows you to Disconnect or go to another computer. When on the remote you can do pretty much everything that you could if you were actually setting in front of the computer.

Remote computer screen



Semi transparent info box



Looking at my email

The screenshot shows the Outlook Express interface. The 'Inbox' folder is selected in the left pane. The main pane displays a list of emails. The selected email is from 'Hilton Head Island Computer Club' with the subject 'Weekly Announcements'.

From	Subject	Received
Hilton Head Island Co...	Meeting Reminder- Program Change	10/11/2005 2:5...
Hilton Head Island Comp...	Weekly Announcements	10/11/2005 2:04 PM
Jim Hoff	Computers - leave on or turn off at night?	10/11/2005 1:3...
By The Cup	TechSoup...By The Cup: Does Your Reach Exce...	10/11/2005 1:1...
Tom Matzzie, MoveOn.o...	Town Hall Meeting with Rep. Joe Wilson	10/11/2005 11:4...

From: Hilton Head Island Computer Club **To:** Frank Fahey
Subject: Weekly Announcements

HILTON HEAD ISLAND COMPUTER CLUB

ARTICLES	FAQ'S	MEMBERSHIP	PROF. REGISTRY	STAFF - HHICC	VOLUNTEERS
ARCHIVES	HOME PAGE	NEWSLETTER	RESOURCE CENTER	S.H.A.R.E.	WEB PAGES
CALENDAR	MEETINGS	PHONE HELP	SPECIAL INTEREST	TOP PICKS DISK	WORKSHOPS

General Meeting Reminder For
Frank Fahey

Wednesday, Oct. 12th, 7pm at HH Middle School [CLICK HERE FOR MAP](#)

Program Change!!

The topic for the evening will be **"New Microprocessor Technology"** presented by...

5 message(s), 3 unread

Working Online

Trend Micro
Scanning incoming mail...

Easy to use

- I add some of this information to this article while I had another computers screen active. One of our members already has had one of his children load the program on their computer and he has help to solve a problem. If you had a telephone connection at the same time you had the remote operating, the person on the other end can watch all the action.

It is really a great program

